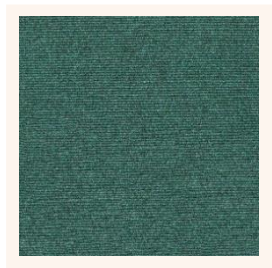


BIRCH CORD & VELOUR

Product Specification	BIRCH CORD	BIRCH VELOUR
Pile Yarn	85% PP, 10% Nylon, 5% Other	85% PP, 10% Nylon, 5% Other
Construction	Fibre Bonded Carpet and Tiles	Fibre Bonded Carpet and Tiles
Dyeing Method	Solution	Solution
Primary Backing	Oxydised Bitumen	Oxydised Bitumen
Pile Weight	950g/m ²	950g/m ²
Total Weight	1350g/m ²	1350g/m ²
Total Weight Tiles	4050g/m ²	3850g/m ²
Standard Roll	2m x 30m	2m x 30m
Tile Size	50cm x 50cm	50cm x 50cm
Tiles per Box	16 Tiles per Box	16 Tiles per Box

Technical Specification

Statistic Propensity	Pass	
Castor Chair* BS EN 985	Pass	*Recommend use of pads for intense use locations
Colour Fastness		
BS1006 to Light	6	
Shampoo	4-5	
Wet Rubbing	4	
Dry Rubbing	4-5	
Flammability BS4790	Low Radius of Ignition	



Installation

All carpets should be fitted in accordance with BS5325: 1996.

Recommended adhesives for Broadloom Carpet:

For permanent bonding:.....Styccobond F3
SEAMS MUST BE SEALED WITH SEAM SEALING ADHESIVE.

Recommended adhesives for Carpet Tiles:

For permanent bonding:.....Styccobond F3
 For Release Bonding:.....Styccobond F41

Maintenance

Birch Cord & Velour © should be vacuumed regularly, commercial cleaning using the 'Envirodry System' or the 'Hot Water Extraction' method is recommended depending on conditions. Spot clean immediately on spill.

For further advice on maintenance contact **Simon Dickinson** on **0115 989 9210**.

10 Year Limited Wear Warranty. Contact the office for details.



Birch Carpets
 Hazel Park Mills
 318 Coleford Road
 Sheffield
 S9 5PH
Tel 0114 243 1230
Fax 0114 243 5118
Email info@birchcarpets.co.uk
Website www.birchcarpets.co.uk

